



Electrifyingly fun to drive.

**The all-new Audi e-tron.**



Electricity consumption combined in kWh/100 km: 21.6 – 25.8 (WLTP)  
CO<sub>2</sub> emissions combined in g/km: 0

Electrifyingly fun to drive.

## The all-new Audi e-tron.

With its combination of electric drive and a comfortable, sophisticated interior, the Audi e-tron creates a new sense of mobility. Whether parking, in the city or on long journeys, the Audi e-tron makes life easier for its driver in many situations. The full-size SUV combines sportiness and everyday practicality. Its two electric motors together with electric all-wheel drive provide for awesome performance and agile handling. The large high-voltage battery is the foundation for a sufficient range. In combination with a comprehensive range of charging options for home and on the move, you can enjoy fully electric driving without having to compromise.



# Powerful and controlled

Whether you accelerate from a standstill or overtake on the motorway - the power of a maximum of 300 kilowatts unfolds immediately. Even in reverse, you will feel the high level of torque. Optimum traction ensures a new generation of the quattro drive, which can be switched on when needed.



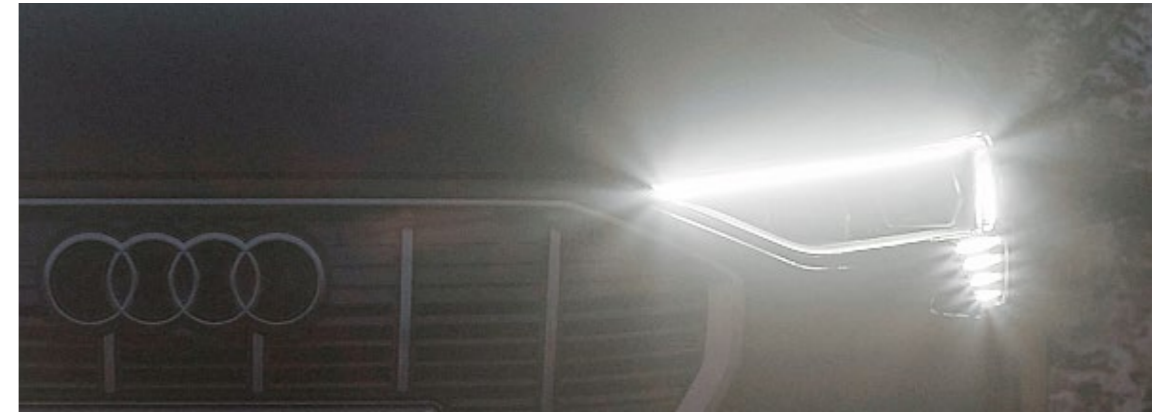
## No limit

The new electric quattro drive permanently and fully variably regulates the ideal distribution of drive torques between the two axles. And within a split second. You'll particularly feel the benefits during off-road trips in the country. But even when driving on the road, you can rely on the services of the quattro drive. Even in slippery complications such as when under-steering or oversteering occur and a reaction would be required of you, the technology jumps for you.



## A strong statement

Thanks to the striking front of the Audi e-tron, you will leave a lasting impression in the rear-view mirror of the vehicle ahead. One of the most eye-catching elements is the single-frame octagon-style grill with vertical struts. The largely closed body are design features of our fully electric model. The three-dimensional bonnet and standard tapered Matrix LED headlights complete the sporty look of the Audi e-tron.



Matrix LED headlights with dynamic turn signal



LED rear lights with dynamic indicators



Electricity consumption combined in kWh/100 km: 22.2 – 26.1 (WLTP)  
CO<sub>2</sub> emissions combined in g/km: 0

## Unmistakably an SUV

In the side view, the shoulder line is an important design element. It runs from the front head-lamps over the flank to the rear lights and visually gives your Audi e-tron a low centre of gravity. The powerful D-pillars and underride protection are clear hallmarks of a SUV. The quattro blisters above the wheels indicate the electric four-wheel drive. The door sill area is clearly contoured and visualised with the black inlays on the door attachment: this is where the battery is located.

# Get in and feel good

Let the sun in with the panoramic glass roof. In particular, your passengers on rear seats will benefit from the bright and friendly atmosphere. Breathe freely and fill up with fresh air: the optional Air Quality package with ioniser and scent ensures first-class air quality. The air quality sensor pays attention to your health: when harmful gases enter the interior, it activates the recirculation system. Thanks to the very low overall noise level, you will simply feel relaxed, as if life has slowed down.



## First class also in the second row

Up to three people can enjoy the spaciousness of the Audi e-tron in the rear. With the bench seat folded down, the maximum storage space is up to 1,725 liters.



## Useful luggage carrier

Thanks to its luxuriant storage volume and folded seats, the maximum load capacity is more than twice as large. Comfortable: the tailgate can optionally be opened by moving your foot.



# A stylish standard bearer

Efficiency, safety and a new kind of technology and driving experience - the virtual exterior mirrors. The flat support reduces the vehicle width by 15 centimetres compared to a conventional exterior mirror and thus also the air resistance and the wind noise level. A small camera projects the images digitally into high-contrast OLED displays inside. In particular, at dusk and at night, you can see rear-end vehicles with razor-sharp clarity, despite headlamp reflections. The Audi e-tron is the first production model in which the virtual exterior mirror is used.



Virtual exterior mirrors. Standard feature for e-tron Sportback, optional for e-tron.

## Ample width

With the Audi e-tron, you can negotiate distances from Hamburg to Düsseldorf without having to stop to charge. The high degree of recuperation, i.e. the recovery of braking energy, plays a considerable part in this. During much more than 90 percent of all decelerations, the Audi e-tron recharges itself via its e-machines. In combination with the electro hydraulically integrated brake control system, which we are the first manufacturer worldwide to use in an electrically driven passenger vehicle, the electric SUV exploits its maximum potential for recuperation.



## Informed and secure

In the Audi e-tron, you can rely on intelligent technologies and simply focus on traffic. Important information and notifications are available in the standard Audi virtual cockpit and the top infotainment system MMI navigation plus. Various driver assistance systems ensure your safety.

# Charging made easy

Thanks to a comprehensive range of digital services, you can keep an eye on charging-specific information at all times - in the Audi virtual cockpit of the Audi e-tron.

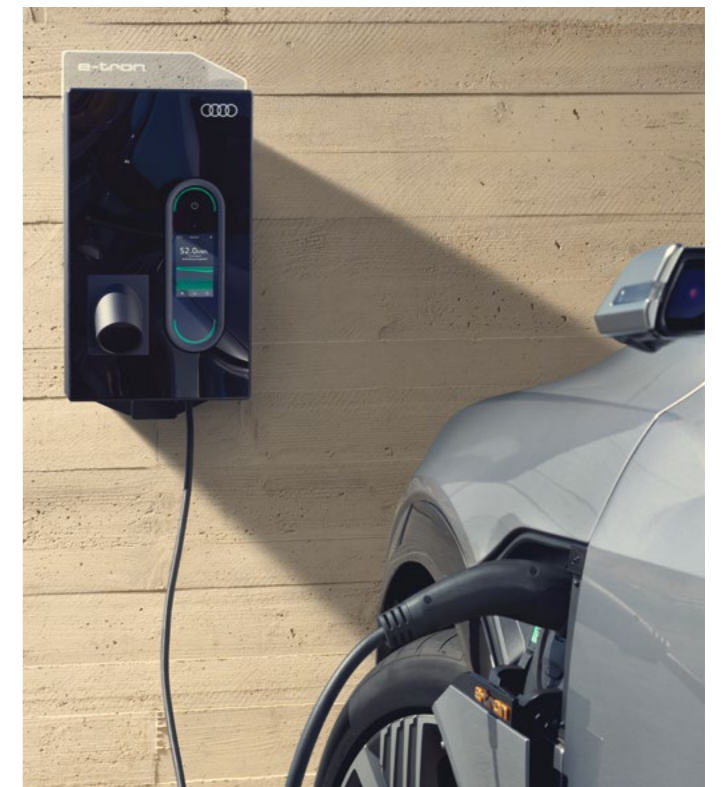
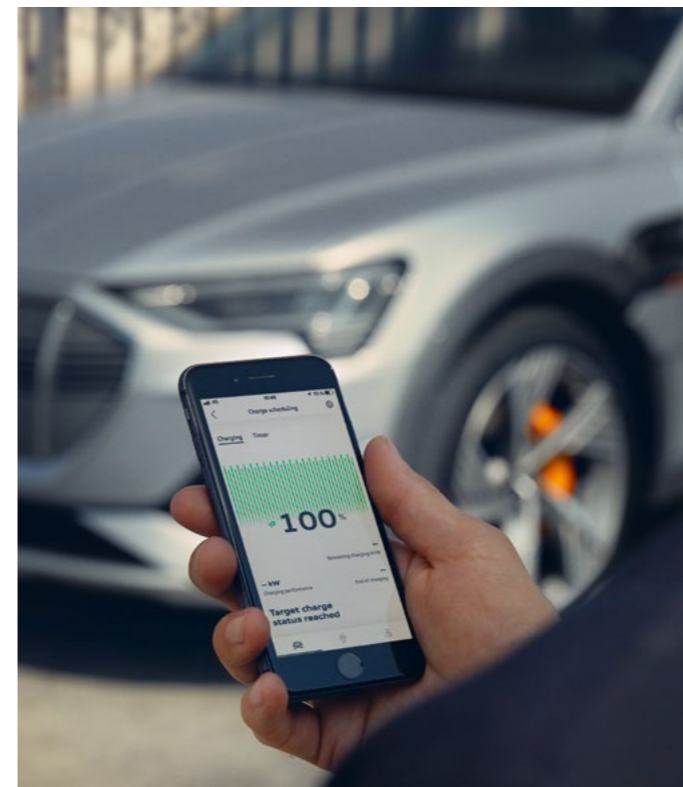


## Public charging : Charge from 5% up to 80% in just 30 minutes

The Audi e-tron has the max. charging power of 150 kW and can hold up to 80% of the battery state-of-charge (SOC). As a result, the Audi e-tron only needs 30 minutes on a high-power charging (HPC) column for a typical charge of 5% to 80%. If, on the other hand, you want to fill the battery to 100% in order to be able to exploit the maximum range, the sophisticated battery management system only takes another 20 minutes.

## Home charging

The e-tron charging system compact has a charging capacity of up to 11 kW. On the control unit, the user can manually switch between 100 percent and 50 percent charging performance. This can be useful if various other electrical appliances are already in use at home.



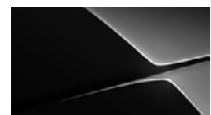
# Show your colours

Give your Audi e-tron a personal touch by choosing the paint colour. There are a total of ten tones to choose from. With accents in high-voltage orange, the Audi e-tron highlights its character as a purely electric vehicle. They can be found, for example, on the e-tron logo on the electric tailgate and on the orange calipers. The colour-highlighted wheel arch covers and door sills convey the message: the Audi e-tron is an off-road vehicle.



## e-tron 55 quattro®

### Solid



Brilliant black

### Metallic



Catalunya red



Floret silver



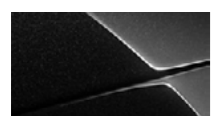
Galaxy blue



Glacier white



Manhattan gray



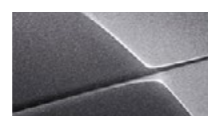
Mythos black



Navarra blue



Siam beige



Typhoon gray

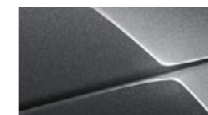
## e-tron Sportback 55 quattro® S-line

### Solid



Brilliant black

### Pearl



Daytona gray

### Metallic



Antigua blue



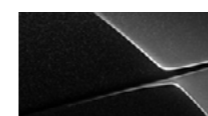
Catalunya red



Floret silver



Glacier white



Mythos black



Navarra blue



Plasma blue

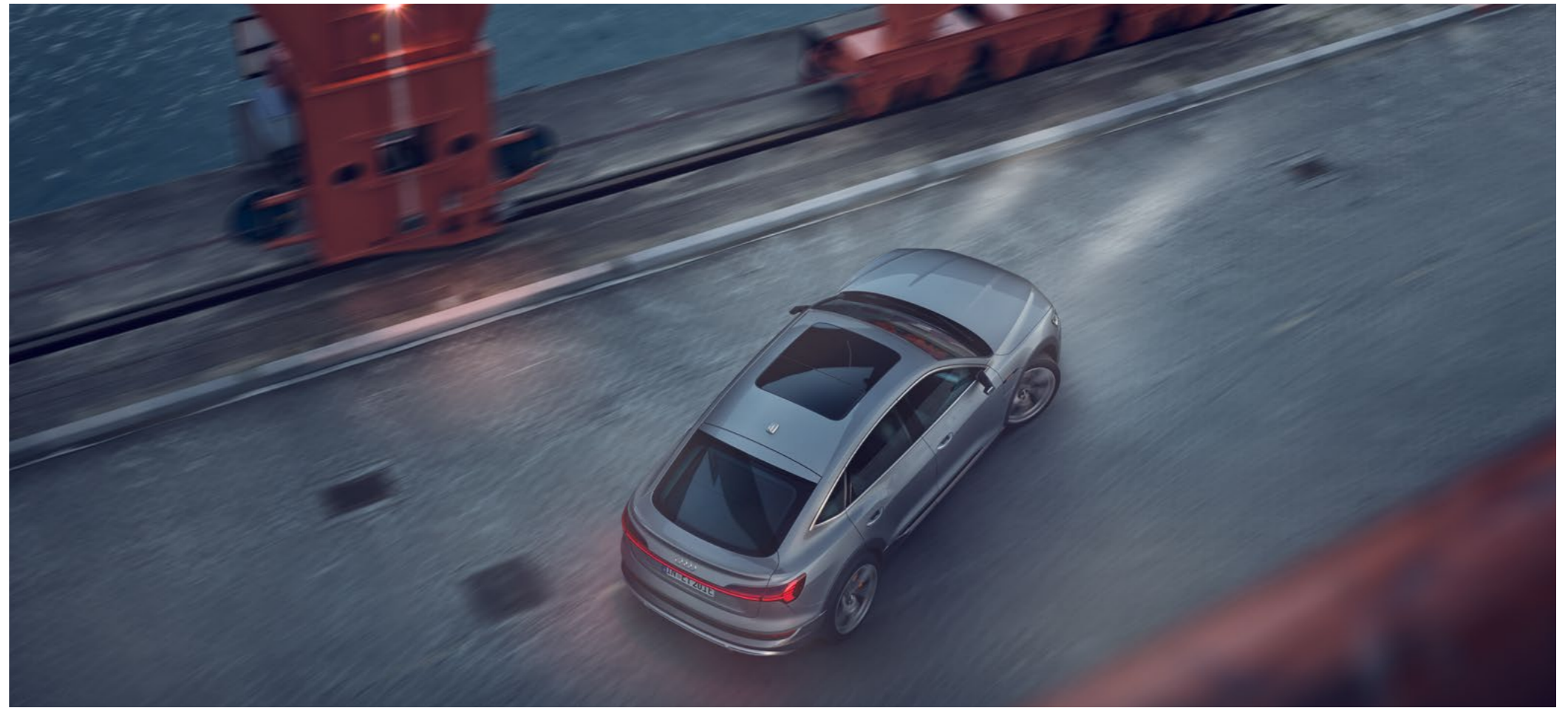


Siam beige



# It's your chance

Dive into the exciting world of electromobility with the Audi e-tron and help shape the future. Our first all-electric SUV is your sporty, everyday and safe companion for a new era. Make your Audi e-tron inspiringly unique with Audi wheels, selected inlays and coloured leather now!



## Allow wheels

### e-tron 55 quattro®

Standard

20"



Optional

21"



### e-tron Sportback 55 quattro® S-line

Standard

21"



Optional

21"



22"



## Upholstery in Milano leather



## Audi Inlays



Inlays in fine grain ash, natural volcano gray



Inlays in matt brushed aluminum, dark



Natural walnut inlays

Model	e-tron 55 quattro®	e-tron Sportback 55 quattro® S-line
Engine type	Lithium-ion high-voltage battery powered, full electric	Lithium-ion high-voltage battery powered, full electric
Max. output	300 kW	300 kW
Max. torque	664 Nm	664 Nm
<b>Power transmission</b>		
Drive type	quattro® permanent all-wheel drive	quattro® permanent all-wheel drive
<b>Weights / capacities</b>		
Empty weight	2,565 kg	2,565 kg
Perm. Total weight	3,130 kg	3,130 kg
Permissible roof load limit / Support load	75/80 kg	75/80 kg
<b>Mileage</b>		
Top Speed	200 km / h	200 km / h
Acceleration	0-100 km / h: 5.7s	0-100 km / h: 5.7s
<b>Consumption</b>		
Fuel type	Electric	Electric
<b>Consumption and emission values according to NEDC</b>		
Combined power consumption Combined CO2 emissions	22.2 - 26.1 kWh/100km 0 g / km	21.6 - 25.8 kWh/100km 0 g / km
<b>Electric range according to WLTP</b> *Real world figures may differ due to external factors.		
	370 - 440 km	374 - 452 km

Dimensions are for empty vehicle weight.

Luggage capacity e-tron55 quattro® 660/1,725 l ; e-tron Sportback 55 quattro® S-line 615/1,665 l

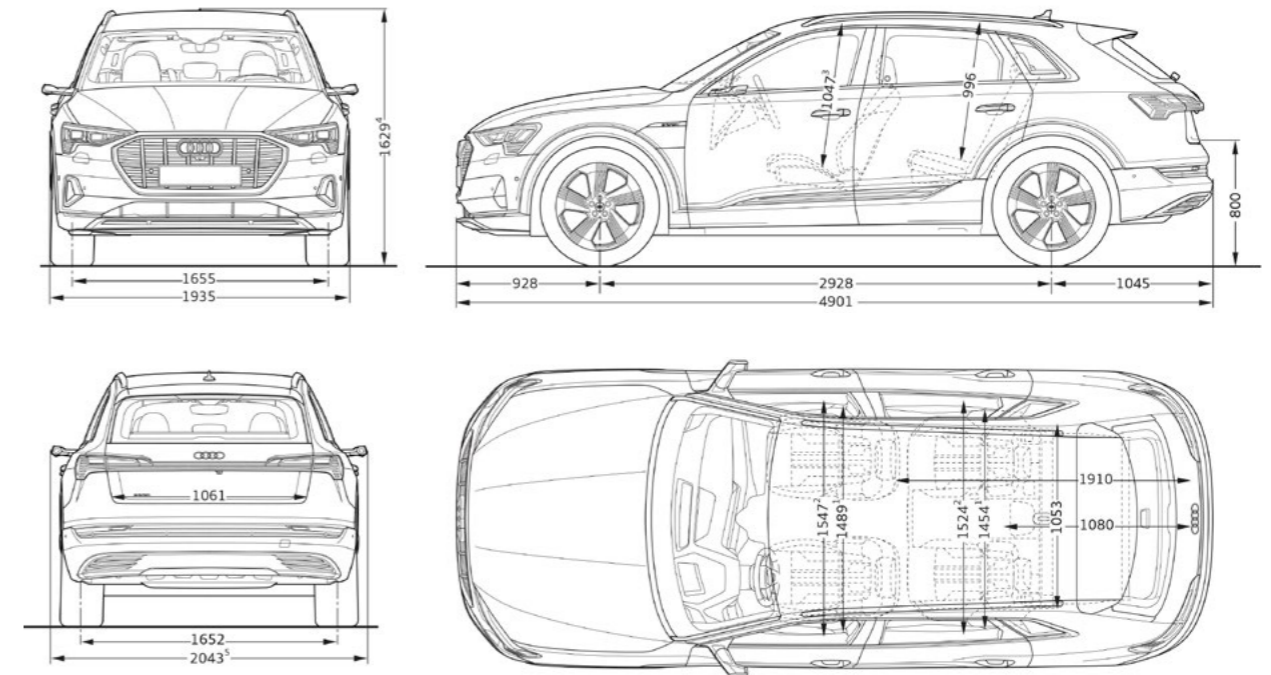
(second value is with the rear seat backrest folded down and the vehicle loaded up to roof height). Turning circle approx. 12.2 m.

\* Maximum headroom. \*\* Elbow room width. \*\*\* Shoulder room width. \*\*\*\* Vehicle height with roof aerial.

\*\*\*\* Dimension based on vehicle equipped with virtual exterior mirrors. Vehicles with rear view exterior mirrors will increase vehicle width by 146 mm.

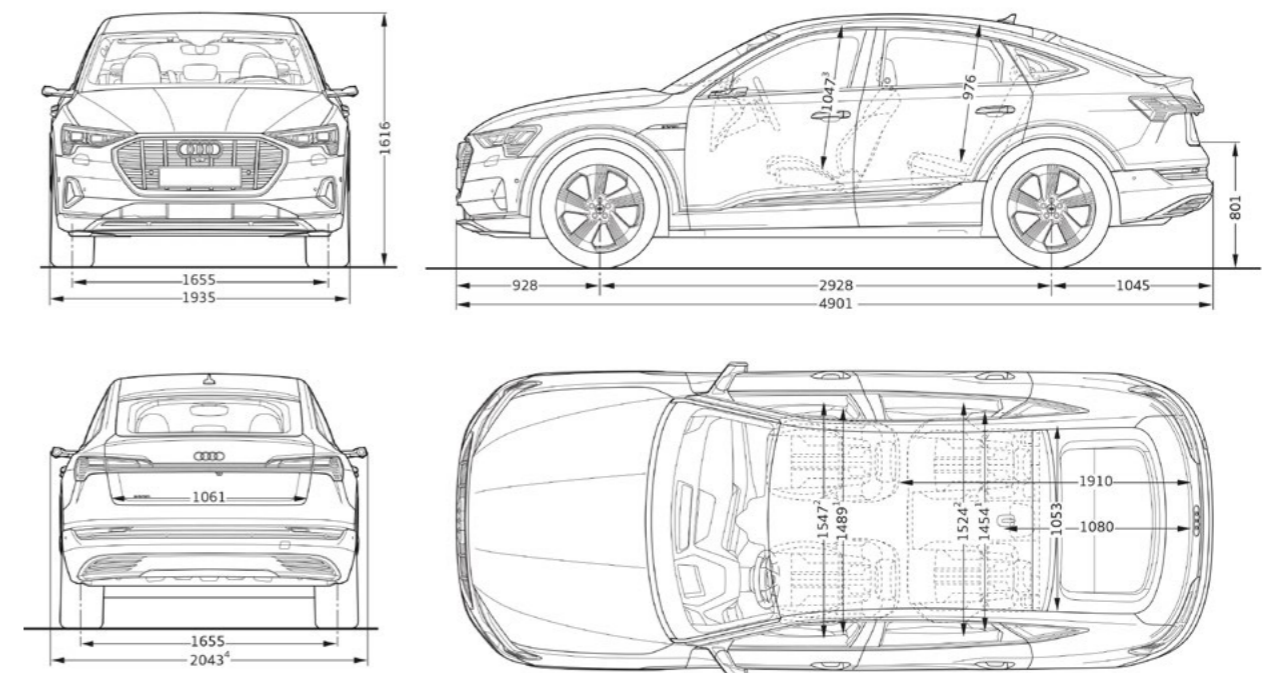
### e-tron 55 quattro®

Dimensions in mm



### e-tron 55 Sportback quattro® S-line

Dimensions in mm





© 2020 Kam Lung Motors Limited. All rights reserved

The equipment, data and prices specified in this document refer to the model range offered in Hong Kong.  
Subject to change without notice; errors and omissions excepted.

[www.audi.com.hk](http://www.audi.com.hk)